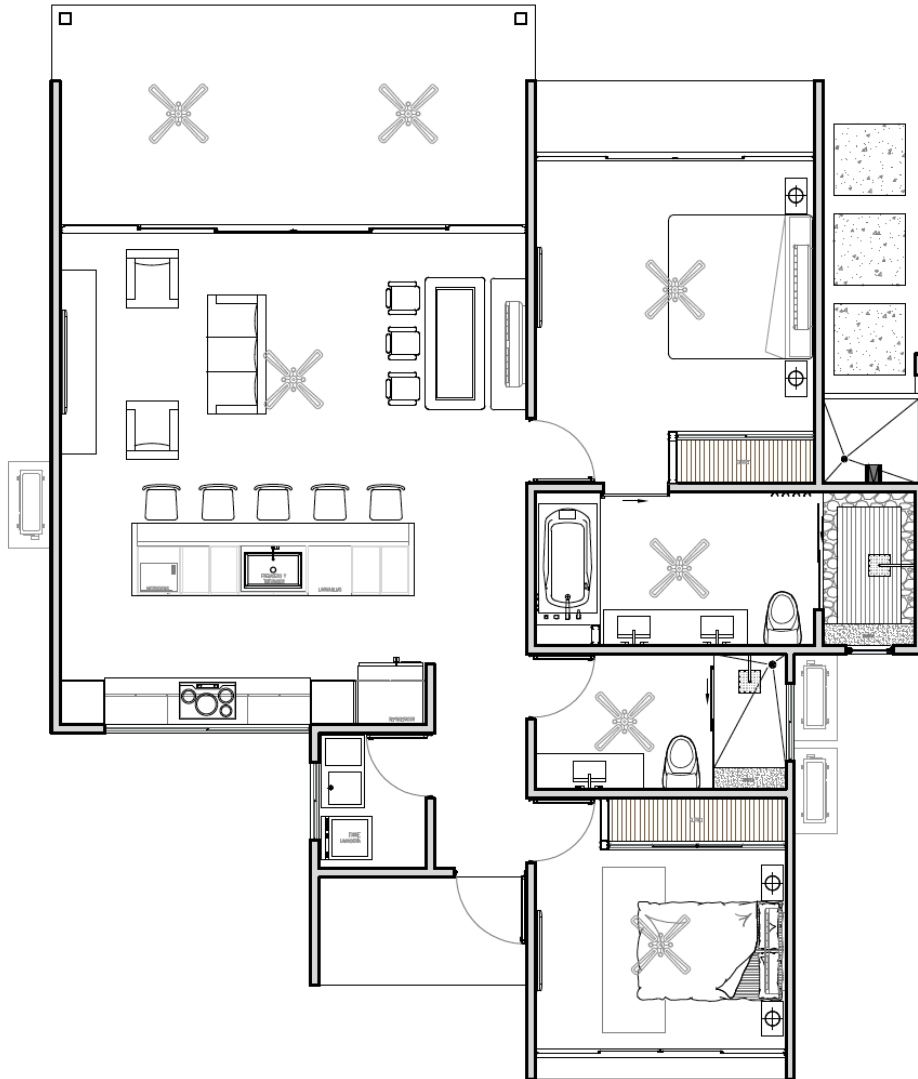


TYPE A - 2 BEDROOMS

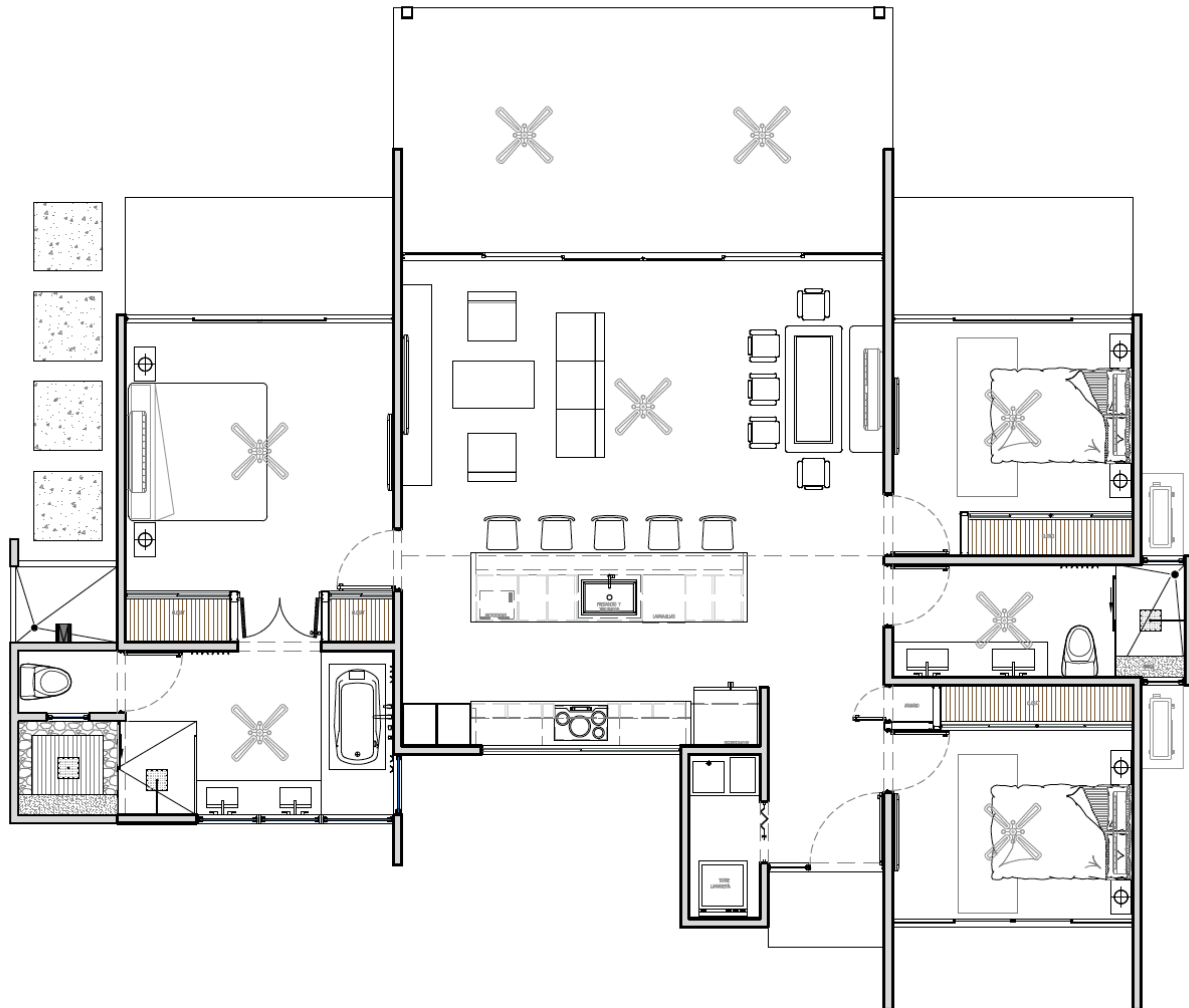


VILLA TYPE A - 2 BEDROOMS, 1 LEVEL

137.3m² home

1 car parking of 14.3m²

TYPE B - 3 BEDROOMS



VILLA TYPE B - 3 BEDROOMS, 1 LEVEL

172.2m² home

2 cars parking for a total of 28.6m²

Storage room available 8.3m²

TYPE C - 5 BEDROOMS



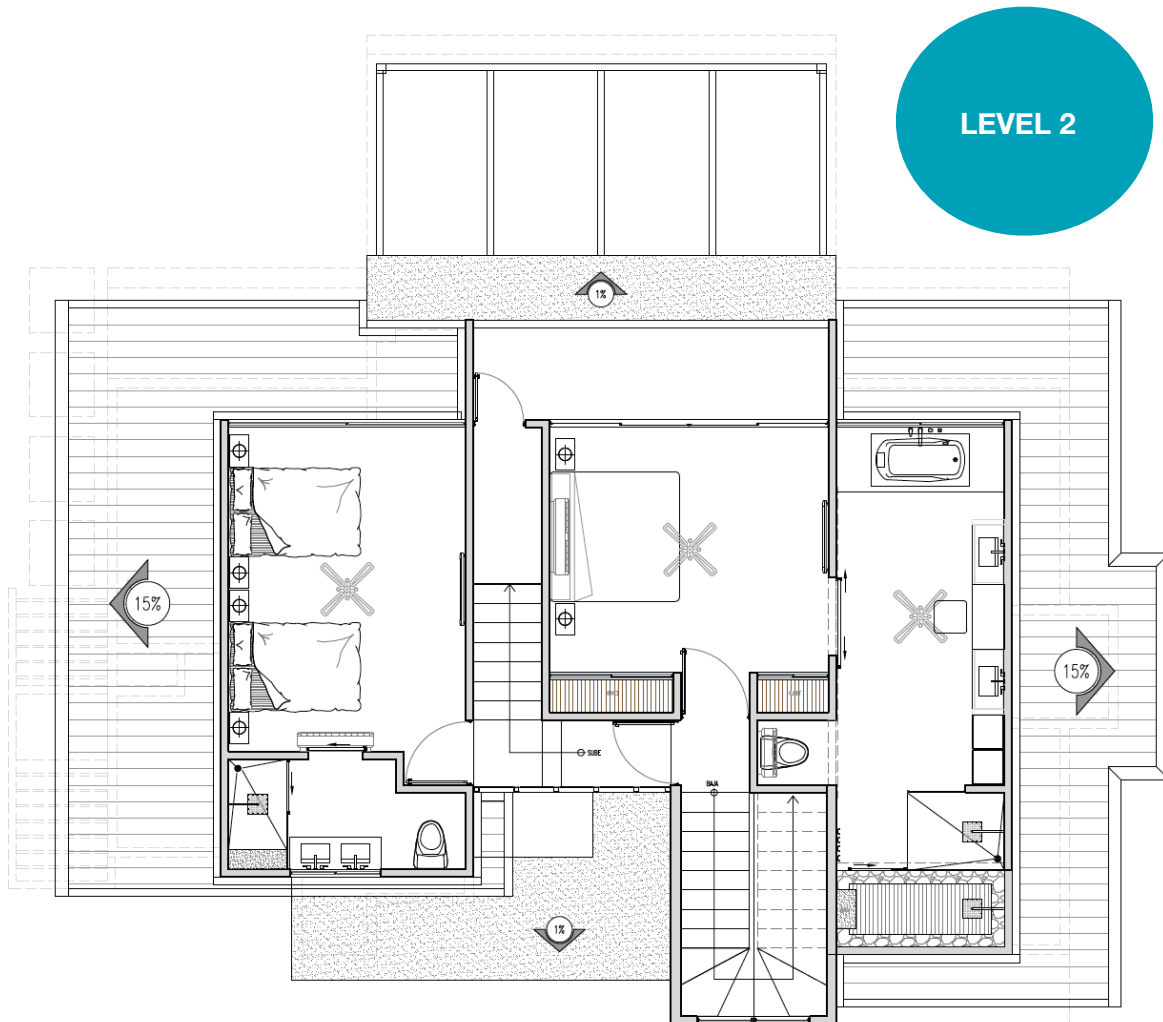
VILLA TYPE C - 5 BEDROOMS, 2 LEVELS plus ROOF DECK

196.6m² (level 1) + 96.0m² (level 2) + 37.6m² (roof deck) = 367.1m²

2 cars parking for a total of 28.6m²

Storage room available 8.3m²

TYPE C - 5 BEDROOMS



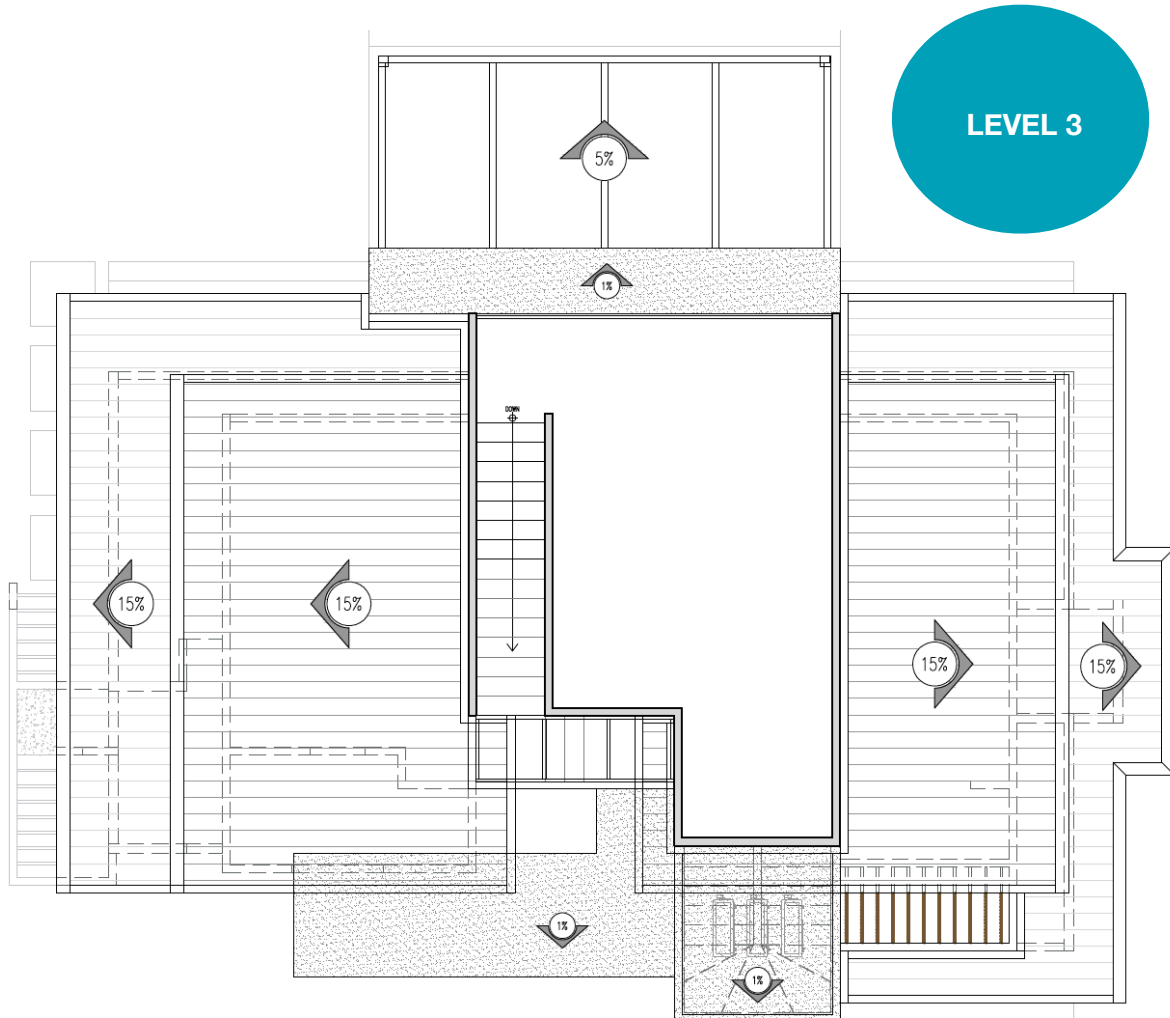
VILLA TYPE C - 5 BEDROOMS, 2 LEVELS plus ROOF DECK

196.6m² (level 1) + 96.0m² (level 2) + 37.6m² (roof deck) = 367.1m²

2 cars parking for a total of 28.6m²

Storage room available 8.3m²

TYPE C - 5 BEDROOMS



VILLA TYPE C - 5 BEDROOMS, 2 LEVELS plus ROOF DECK

196.6m² (level 1) + 96.0m² (level 2) + 37.6m² (roof deck) = 367.1m²

2 cars parking for a total of 28.6m²

Storage room available 8.3m²